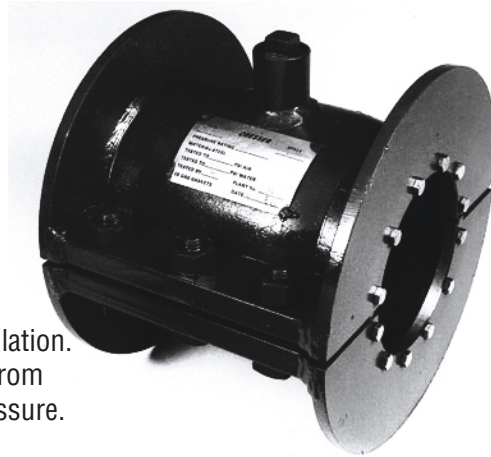




# Sleeves for High Pressures

## Style 93 Low Profile Split Repair Sleeve for Steel Pipe

- Especially designed for steel transmission piping
- Designed to completely enclose and permanently repair pit holes or splits in steel pipe up to 8" in length; or encase defective screw collars and butt-welded joints. Sleeves will assemble over deflected pipe as much as 5 degrees.
- Cap screw design provides added circumferential sealing capability around the pipe.
- All sleeves are factory-tested to 1.5 times rated pressure.
- Sleeves come completely factory-assembled for quick installation. Fabricated from high quality carbon steel or manufactured from cast steel. Sleeves are also vented for installation under pressure.



### Style 93 Materials of Construction

**Body Halves:** Weldable steel suitable for the particular application to ASTM A36 or equivalent.

**Follower:** Carbon Steel AISI C1015

**Cap Screws:** Heat-treated Carbon Steel C1038 cadmium-plated.

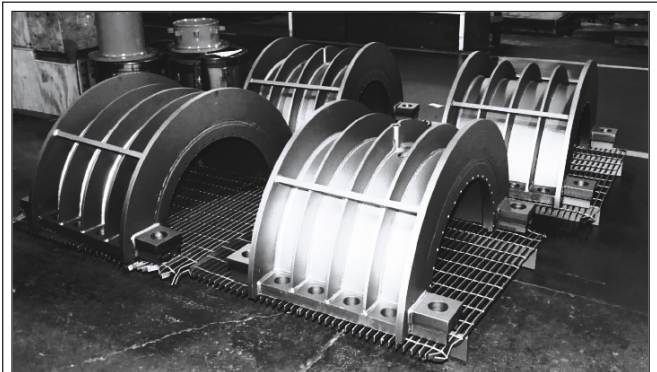
**Studs:** Shall meet chemical and physical properties of ASTM A193 Grade B7 and the strength requirements of the application.

**Gaskets:** Sleeves are shipped with Nitrile rubber-compounded gaskets that will not deteriorate from age or exposure to air under normal storage or use conditions. Nitrile gaskets shall meet the following specifications:

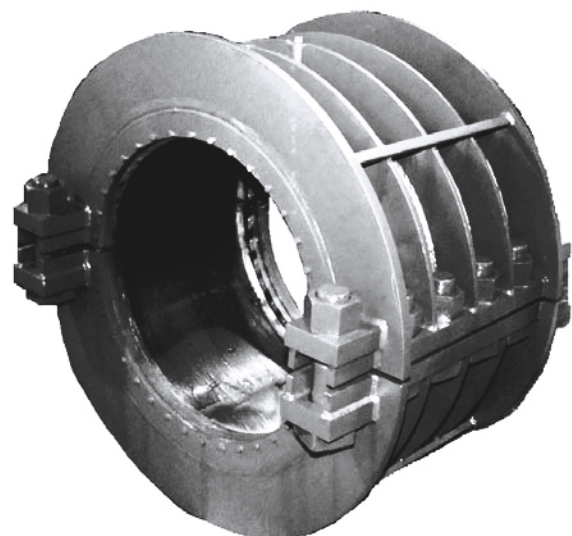
- Durometer Hardness: 70 ± 5
- Tensile Strength: 1000 psi minimum
- Elongation: 200% maximum

The gaskets are immune to attack by impurities normally found in natural gas such as odorants, liquid hydrocarbons, carbon dioxide and water.

**Coatings:** Provided Dresser shopcoat as standard; AL-CLAD™ fusion-bonded epoxy optional.

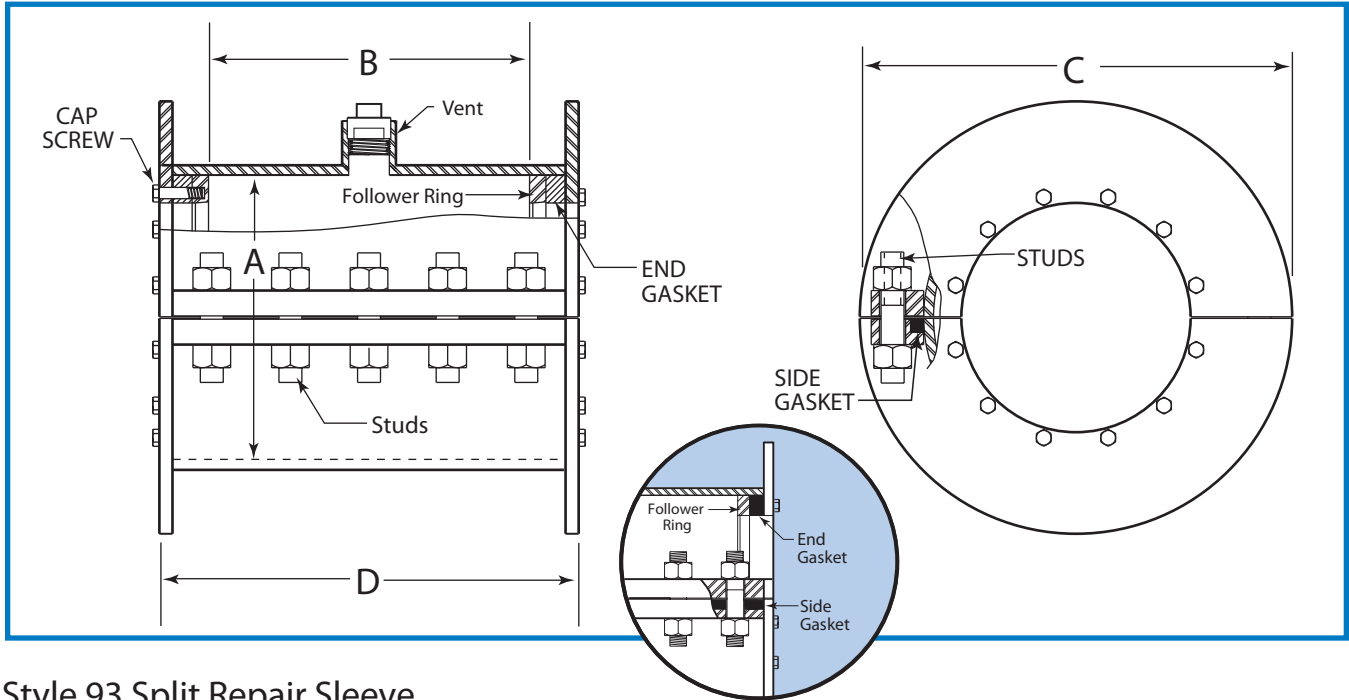


Custom fabricated to 30", these split repair sleeves await assembly for pressure testing. Below, the completed sleeve is ready for packing and shipment to its final destination.



Pressure Ratings	Temperature Ratings
ANSI 150 to 500 psi	-20° to +150°F for all sizes
ANSI 300 to 1000 psi	
ANSI 600 to 1500 psi	

# Style 93 Low Profile Split Repair Sleeve Dimensions



## Style 93 Split Repair Sleeve Dimension Specifications for Sizes 6" thru 48"

PIPE (Steel)		ANSI 150 to 500 PSI				ANSI 300 to 1000 PSI				ANSI 600 to 1500 PSI				VENT Diameter (IN)
Nom. Size (IN)	Outside Diam. (OD)	Inside Dim. Diam. (A)	Length (B)	Overall Dim. Diam. (C)	Length (D)	Inside Dim. Diam. (A)	Length (B)	Overall Dim. Diam. (C)	Length (D)	Inside Dim. Diam. (A)	Length (B)	Overall Dim. Diam. (C)	Length (D)	
6	6.625	8-7/8	8	14-1/2	12-3/8	8-7/8	7-1/2	17-7/8	12	8-7/8	8-1/4	19-1/8	13	1-1/4
8	8.625	10-7/8	8	16-1/2	12-3/8	10-7/8	7-1/2	19-7/8	12	10-7/8	8-1/2	20-3/8	19-1/2	1-1/4
10	10.750	13	8	18-3/4	12-3/8	13	7-1/2	22-1/2	12-1/2	13	7-1/4	22	17-3/4	2
12	12.750	15	8-1/4	21-3/8	13-3/4	15	12	25-1/2	17	15	8-3/4	26	21-1/4	2
14	14	16-1/4	8-1/4	22-3/4	13-3/4	16-1/4	8-1/2	25-3/4	13-1/2	16-1/4	8-3/4	27-1/4	21-1/4	3
16	16	18-1/4	8-1/4	25-1/8	13-3/4	18-1/4	8-3/4	27-3/4	19-3/4	18-1/4	8-3/4	29-1/4	21-1/4	3
18	18	20-1/4	8-1/4	27-1/8	13-3/4	20-1/4	8-3/4	30-1/4	20-1/4	20-1/4	8-3/4	30-3/4	20-3/4	3
20	20	24-1/4	8-1/4	28-5/8	14	22-1/4	11-1/2	35-1/4	17	22-1/4	8-3/4	32-3/4	20-3/4	3
22	22	24-1/4	8-1/4	30-5/8	14	24-1/4	11-1/2	37-1/4	17	24-1/4	11-1/2	37-1/4	26	3
24	24	26-1/4	8-1/4	33-1/8	14	26-1/4	11-1/2	39-1/4	17	26-1/4	11-1/2	39-1/4	26	3
26	26	26-1/4	8-1/4	33-1/8	14	28-1/4	7-1/2	39-1/4	20	28-1/4	11-1/2	41-1/4	26	3
28	28	26-1/4	8-1/4	33-1/8	14	30-1/4	9	40-3/4	21	30-1/4	11-1/2	43-1/4	26	3
30	30	26-1/4	8-1/4	33-1/8	14	32-1/4	12-3/4	44-3/4	26-3/4	32-1/4	11-3/4	45-1/4	26-1/4	3
36	36	36-1/4	10-7/8	47-1/4	16-3/4	36-1/4	9	47-1/4	21-1/2	-	-	-	-	3
42	42	42-1/4	11-1/2	55-1/4	16-1/4	42-1/4	13-1/2	55-1/4	26-1/2	-	-	-	-	3
48	48	48-1/4	11-1/2	61-1/4	16-1/4	48-1/4	12	61-1/4	26-1/2	-	-	-	-	3

NOTE: Dresser will custom fabricate larger diameters upon request. Higher pressure ratings, longer sleeve lengths and/or metric sizes can be furnished per order. Please consult customer service with your particular individual application requirements.

SUPPLIED BY:



Anode Engineering Pty Ltd | Engineering Services  
P: 1800 446 400  
E: admin@anodeengineering.com  
www.anodeengineering.com

SUPPLIED BY:



Lordco New Zealand  
P: +64 4 939 3944  
E: sales@lordco.co.nz  
www.lordco.co.nz