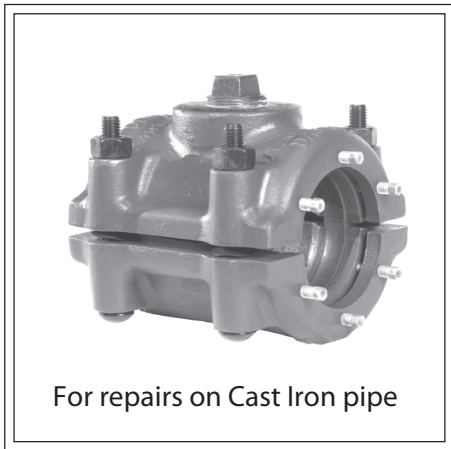


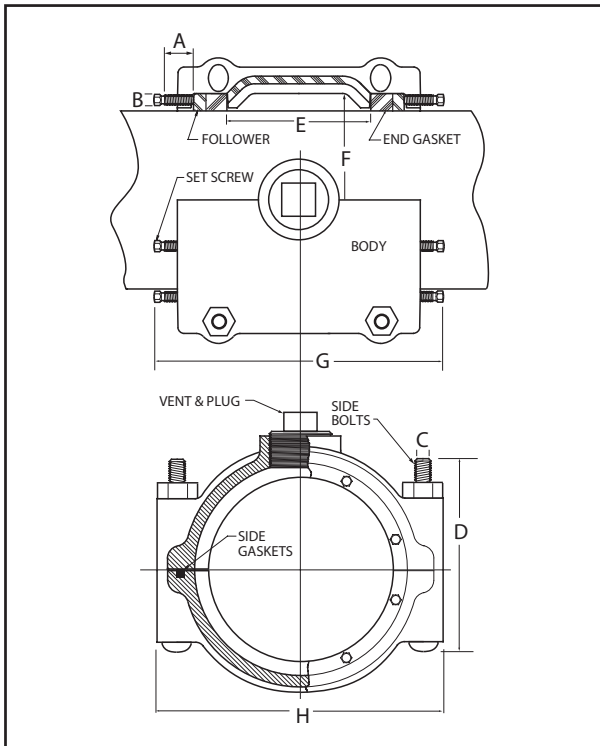
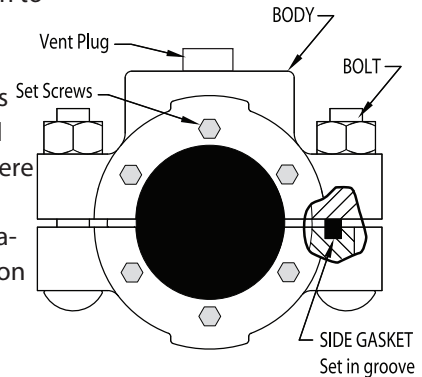
# Style 80 "Ready-Pack" Sleeve



Dresser® Style 80 Split "Ready-Pack" Sleeves are used to enclose and permanently repair breaks, splits and holes in cast iron pipe. Style 80 sleeves can also be used as an efficient, low-cost tapping sleeve for branch service connections.

Style 80 sleeve bodies are cast from close-grained gray iron (malleable iron in 2" size). Steel follower rings on each end are completely enclosed in the sleeve body. Carbon steel set screws are drawn up against the follower ring to compress the gasket creating total circumferential sealing on the pipe. Side bolts, which are fully enclosed within the sleeve body to prevent corrosion, are tightened to compress side gaskets providing a complete leakproof seal.

Dresser Style 80 sleeves are recommended for all customary pressures where pipe wall thickness is in conformity with specifications for standard cast iron pipe.



### Materials of Construction

- Body: Cast or malleable iron
- Vent Plug: Forged steel to ASTM A105 or Cast to ASTM A126-42 Class A
- Follower Rings: Cold-formed carbon steel
- Bolts & Nuts: Alloy to AWWA C111/ANSI A21.11
- Gaskets: Grade 29
- Set Screws: Heat treated carbon steel, cadmium plated
- Coating Provided Dresser shopcoat as standard; Fusion-bonded epoxy optional

## Style 80 Size Specifications

PIPE Nominal Size (CIP)	Range of Fit Outside Diameter (OD)	End Screws Number Diam. x Length A & B	Side Bolts Number Diam. x Length C & D	End Gaskets Section Dimensions	Side Gaskets Section Dimensions	Inside Dimensions <sup>1</sup>		Overall Dimensions		Vent* Diam.	Weight Shipping Each (Lbs.)
						Diam. (E)	Length (F)	Diam. (G)	Length (H)		
2	2.290 - 2.540	12 - 3/8 x 1	4 - 1/2 x 3-1/2	5/8 x 5/8	5/16 x 1/2	3-15/16	2-1/2	6-5/8	7-3/4	3/4-1/1/4	20
2	2.540 - 2.790	12 - 3/8 x 1	4 - 1/2 x 3-1/2	5/8 x 5/8	5/16 x 1/2	3-13/16	2-1/2	6-5/8	7-3/4	3/4-1/1/4	20
3	3.750 - 4.000	12 - 3/8 x 1	4 - 5/8 x 5-1/2	5/8 x 3/4	5/16 x 1/2	5-5/32	4	7-15/16	9-3/8	3/4-2/1/2	40
4*	4.740 - 4.990	12 - 3/8 x 1	4 - 5/8 x 5-1/2	5/8 x 3/4	5/16 x 1/2	6-5/32	4	8-15/16	9-3/8	3/4-3	45
6*	6.840 - 7.090	16 - 3/8 x 1	4 - 5/8 x 6-1/2	5/8 x 3/4	5/16 x 1/2	8-1/4	4	11-1/16	9-5/16	3/4-3	60
8	8.990 - 9.240	20 - 3/8 x 1	4 - 5/8 x 7-1/2 2 - 5/8 x 5-1/2	5/8 x 13/16	5/16 x 1/2	10-13/32	7	14-3/8	12-1/2	3/4-4	100

<sup>1</sup> Inside Dimension "E" as indicated in cross section drawing, is distance between inside of end gaskets. This length is equal to or greater than found between calking spaces in foundry "splits" as shown in AGA Standards Specifications for Service Sleeves.

\* Also available in long pattern design with vent size up to 4". Consult factory for specification details. Style 80 long body sleeves have six side bolts.

NOTE: For other cast iron pipe not listed above see the Dresser Style 57 Repair Sleeves on page 11.

SUPPLIED BY:



Anode Engineering Pty Ltd | Engineering Services  
P: 1800 446 400  
E: admin@anodeengineering.com  
www.anodeengineering.com

SUPPLIED BY:



Lordco New Zealand  
P: +64 4 939 3944  
E: sales@lordco.co.nz  
www.lordco.co.nz