

Style 64 Bolted Riser Tee

Supplied with 711 Insulating Inlet and Conductive Outlet

Dresser® Style 64 Riser Tees are designed to provide a flexible, low-cost method of making gas service connections of deeply buried mains, thus saving on excavation costs. With the unique combination of compression end components, the Style 64 is designed as a seal and restraining connection. As the nuts are tightened, the coupling followers compress the gaskets thus forcing the steel grip rings to collapse around the pipe end, providing both seal and restraint. The gripping action increases as the pipe attempts to pull out of the coupling. Proper insert stiffeners for P. E. pipe are provided by Dresser.

Style 64 Riser Tees are available in 3" and 4" I.D. for both Steel and P. E. pipe sizes and exceed the requirements of D.O.T. Code 192.283(b). All Style 64 tees are shipped with factory applied Dresser AL-CLAD™ fusion-bonded epoxy coating as standard.

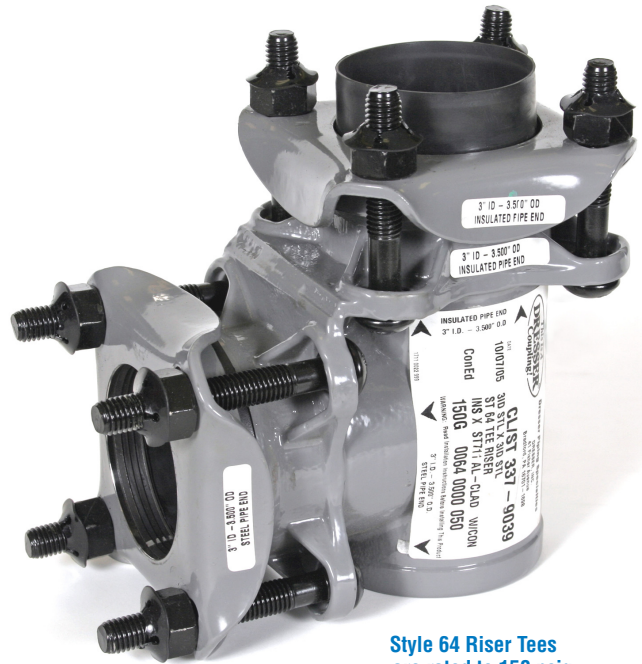
Insulating and Conductive Design

Insulating Inlets are used when pipe is to be electrically isolated for cathodic protection, and for insulating between pipe of dissimilar metals. This is accomplished by insulating one pipe end from the coupling and other pipe end.

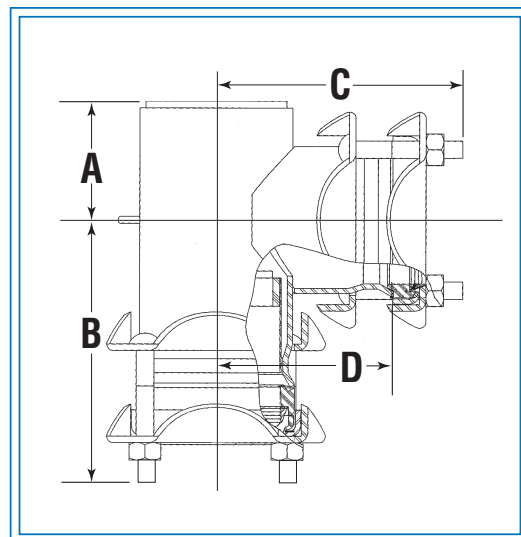
Conductive Outlets are used for connections to be electrically joined so as to share cathodic protection. Pipe-to-pipe continuity is assured with specially pinned Dresser armored gaskets. Insulating and conductive ends can be interchangeable upon request, please consult factory for individual requirements.

Style 64 Size Specifications

Nominal Size IPS (In.)	Outside Diameter (In.)	Dimensions (In.)			
		A	B	C	D
3	3.500	3-1/16	7-1/2	7-1/2	4-5/8
4	4.500	4-1/4	9-1/4	9-1/4	6-1/4



Style 64 Riser Tees are rated to 150 psig



SUPPLIED BY:



Anode Engineering Pty Ltd | Engineering Services
P: 1800 446 400
E: admin@anodeengineering.com
www.anodeengineering.com

SUPPLIED BY:



Lordco New Zealand
P: +64 4 939 3944
E: sales@lordco.co.nz
www.lordco.co.nz