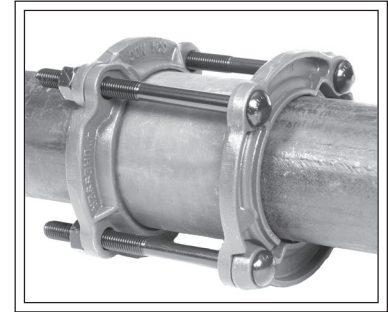


# DRESSER® Style 4 & 41 Collar Clamps

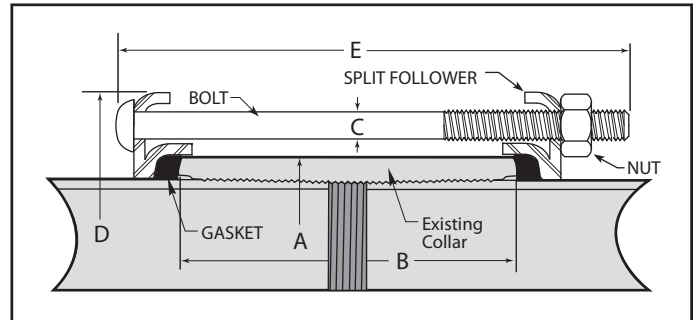
Stops all leaks through screw collars

Dresser Style 4 and Style 41 collar clamps quickly and inexpensively stop leaks through the threads of screw collars (threaded couplings), solvent weld couplings (collars) and stab-type PVC joints. Repairs are permanent and normally made without interrupting service or dismantling the line. Style 4 clamps consists of two malleable split follower rings with interlocking ends on each section, two resilient split Dresser gaskets, and bolts as required for pipe sizes up to 4". Style 41 consists of the same parts except the split follower rings are steel and are connected by steel lock links.



## Materials of Construction

Followers: AISI C1012 or ASME SA36  
 Bolts & Nuts: Alloy to AWWA C 111/ANSI A21.11  
 Gasket: Grade 27 BUNA S



## Style 4 (Malleable)

Sizes Specifications for 3/4" through 4"

Nominal Size Steel (ID)	Outside Diameter (OD)	COLLAR DIMENSIONS		BOLTS Number Diameter (C) x Length	CLAMP DIMENSIONS		GASKET Dimensions	Approx. Shipping Weight (Lbs)
		Overall Diameter (A)	Overall Length (B)		Overall Diameter (D)	Overall Length (E)		
3/4	1.050	1.316	2.125	4- 3/8 x 5-1/4	3-13/16	5-3/4	3/16 X 5/16	3
1	1.315	1.575	2.375	4- 3/8 x 5-1/4	4	5-3/4	3/16 X 5/16	3
1-1/4	1.660	2.054	2.875	4- 3/8 x 5-1/4	4-1/4	5-3/4	3/16 X 5/16	3
1-1/2	1.900	2.294	2.875	4- 3/8 x 5-1/4	4-7/16	5-3/4	7/32 X 5/16	3
2	2.375	2.841	3.625	4- 5/8 x 6-1/2	6-5/16	7	9/32 X 5/8	8
2-1/2	2.875	3.389	4.125	4- 5/8 x 7-1/2	7-5/16	7	11/32 X 5/8	8-1/2
3-1/2	4.000	4.628	4.625	4- 5/8 x 7-1/2	9-1/8	8	11/32 X 3/4	14
4-1/4 CAS	4.500	5.021	3.625	4- 5/8 x 6-1/2	8-1/2	7	23/64 X 3/4	11
4	4.500	5.233	4.625	4- 5/8 x 7-1/2	8-1/2	8	23/64 X 3/4	11

## Style 41 (Steel)

Sizes Specifications for 5" O.D. through 12" I.D.

Nominal Size Steel (ID)	Outside Diameter (OD)	COLLAR DIMENSIONS		BOLTS Number Diameter (C) x Length	CLAMP DIMENSIONS		GASKET Dimensions	Approx. Shipping Weight (Lbs)
		Overall Diameter (A)	Overall Length (B)		Overall Diameter (D)	Overall Length (E)		
4-3/4 CAS	5.000	5.521	3.625	4- 5/8 x 7.0	9-13/16	8	3/8 X 3/4	18
4-1/2	5.000	5.733	4.625	4- 5/8 x 8.0	9-13/16	9	3/8 X 3/4	18
5	5.250	5.828	4.125	4- 5/8 x 7-1/2	9-13/16	8-1/2	5/16 X 3/4	19
5-3/16	5.500	6.078	4.125	4- 5/8 x 7-1/2	9-13/16	8-1/2	5/16 X 3/4	19
5	5.563	6.420	5.125	4- 5/8 x 8-1/2	9-13/16	9-1/2	7/16 X 21/32	20
5-1/8	6.000	6.664	4.125	6- 5/8 x 7-1/2	10-1/8	8-1/2	11/32 X 3/4	22
6-1/4 CAS	6.625	7.308	4.625	6- 5/8 x 8.0	10-3/4	9	11/32 X 3/4	23
6	6.625	7.482	5.125	6- 5/8 x 8-1/2	10-3/4	9-1/2	7/16 X 3/4	23
6-5/8 CAS	7.000	7.692	4.625	6- 5/8 x 8.0	11-1/8	9	23/64 X 3/4	23
7-5/8 CAS	8.000	8.788	5.125	6- 5/8 x 8-1/2	12-1/8	9-1/2	1/2 X 11/16	26
8-1/4 CAS	8.625	9.413	5.125	6- 5/8 x 8-1/2	12-7/8	9-1/2	1/2 X 3/4	28
8	8.625	9.596	6.125	6- 5/8 x 9-1/2	12-7/8	10-1/2	1/2 X 3/4	28
9-5/8 CAS	10.000	10.911	6.625	8- 5/8 x 9-1/2	14-1/8	10-1/2	7/16 X 3/4	33
10	10.750	11.958	6.625	8- 5/8 x 10.0	15-3/8	11	5/8 X 23/32	44
11-5/8 CAS	12.000	12.911	6.125	8- 5/8 x 9-1/2	16-5/16	10-1/2	7/16 X 3/4	42
12	12.750	13.958	6.625	8- 5/8 x 10.0	17-3/8	11	5/8 X 23/32	50

SUPPLIED BY:



Anode Engineering Pty Ltd | Engineering Services  
 P: 1800 446 400  
 E: admin@anodeengineering.com  
 www.anodeengineering.com

SUPPLIED BY:



Lordco New Zealand  
 P: +64 4 939 3944  
 E: sales@lordco.co.nz  
 www.lordco.co.nz