

DRESSER® Style 360® Repair Clamp

For fast, easy, safe repair of leaks in cast/ductile iron and steel mains...

- Smaller sizes feature flexible band for easier installation
- 7.5 inch wide clamp has three nuts – middle nut can be used to pre-tighten clamp
- Special one-inch long nuts allow tightening with standard deep socket wrench

The Dresser® Style 360® repair clamp offers simplicity and ease of installation. Just wrap the clamp around the pipe, drop the bolts in place and tighten. It's that simple! Moreover, special one-inch long nuts allow the use of a standard deep socket wrench for complete tightening. In the popular 7.5 inch clamp width, there is also a third nut so the middle nut can be used to pre-tighten the clamp.

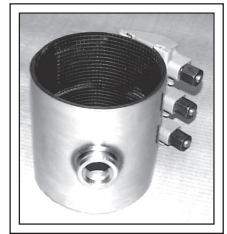
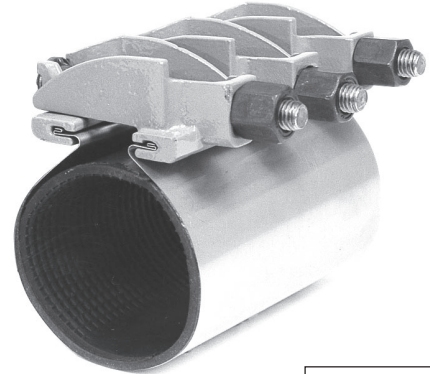
Additionally, the smaller sized clamps feature a flexible band which means less holding force is required while tightening.

With the "360" clamp you can repair holes, breaks and splits in the pipeline. You can use it where pipe ends are separated, or where ends are deflected up to 4 degrees or 1/8 inch. Or you can join two pipes with a variation of 1/4 inch outside diameter.

Clamp features include a tapered gasket with a gridded design and the spanner is molded flush with the gasket to prevent "hang up." The "360" has a stainless band, lugs of rugged ductile iron and bolts of corrosion-resistant Dresserloy.

Available with Service Outlet

The service outlet addition permits fast, easy repair of pulled or broken service connections. Service outlet clamp can be used on complete circumferential breaks even when the pipe ends



are separated or deflected up to 4 degrees – without changing the service location or tapping the main. Service outlet clamp is available in sizes 3" - 14" with widths up to 20 inches.

Multi-Band Clamp

Features a multi-band design in the 14" through 24" sizes. Clamp is packaged and shipped "in the flat" meaning the bands are not formed to the radius of the pipe. Reduces storage space and installation time, and has twice the adjustment range of the single clamp.

Wide-Band Clamp

For nominal pipe sizes 4", 6", 8", 10" and 12" with ranges to cover IPS, DI and Pit Cast O.D. as follows:

- 4" (4.44" - 5.24") x 7-1/2", 10", 12-1/2" and 15"
- 6" (6.62" - 7.42") x 7-1/2", 10", 12-1/2" and 15"
- 8" (8.62" - 9.42") x 7-1/2", 10", 12-1/2" and 15"
- 10" (10.75" - 11.55") x 12-1/2" and 15"
- 12" (12.75" - 13.55") x 12-1/2" and 15"

Dresser Style 360 Repair Clamp Maximum Working Pressure				Materials of Construction	
0.024" Thick Band	0.036" Thick Band w/No Outlet	0.036" Thick Band With Outlet	0.048" Thick Multi-Band w/No Outlet	Band	AISI Type 304 S.S.
Water Service	Water Service	Water Service	Water Service	Lugs	Ductile Iron
2.12 - 3.70" 250 PSI	5.22 - 7.99" 200 PSI	3.46 - 7.99" 200 PSI	14.38 - 16.08" 130 PSI	Nuts	Dresserloy
3.71 - 4.60" 220 PSI	8.00 - 9.75" 160 PSI	8.00 - 9.75" 160 PSI	16.09 - 17.90" 110 PSI	Bolts	Dresserloy
4.61 - 5.35" 170 PSI	9.76 - 12.03" 120 PSI	9.76 - 12.03" 120 PSI	17.91 - 20.65" 85 PSI	Spanner	AISI Type 304 S.S.
	12.04 - 14.40" 90 PSI	12.04 - 14.40" 90 PSI	20.66 - 23.65" 60 PSI	Gasket	55 Durometer, Gridded Surface

NOTE: On any given installation, the pressure capability of the clamps is influenced by the type and extent of the damage, service conditions, environmental conditions and installation workmanship.

SUPPLIED BY:



Anode Engineering Pty Ltd | Engineering Services
 P: 1800 446 400
 E: admin@anodeengineering.com
 www.anodeengineering.com

SUPPLIED BY:



Lordco New Zealand
 P: +64 4 939 3944
 E: sales@lordco.co.nz
 www.lordco.co.nz