

Stop corrosion in its tracks. That's what we set out to do when we developed the new Apache Tsunami Filming Pig. As every pipeline engineer knows, coating the interior of the line with a quality corrosion inhibitor is one of the best ways to prevent corrosion. The challenge? How to apply inhibitor in a controlled manner.

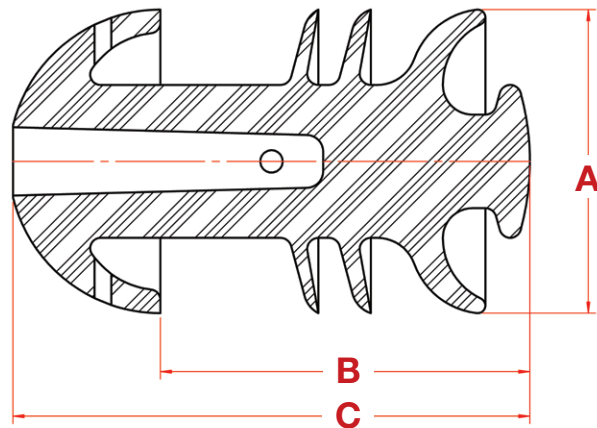
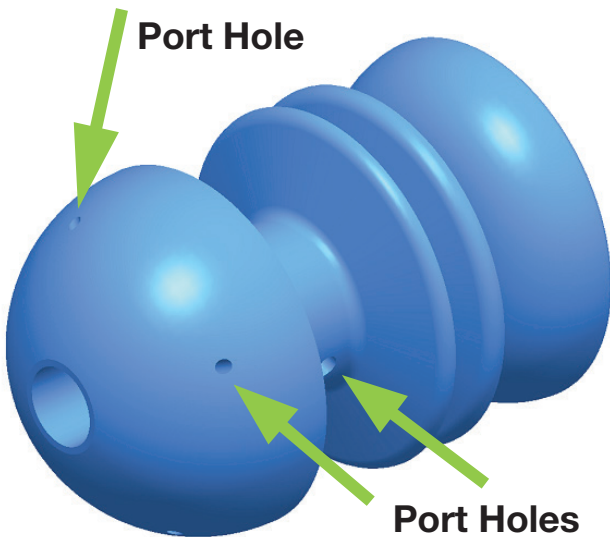
The Tsunami FP was designed for one purpose: to apply a film of inhibitor with 360-degree coverage on the interior pipe wall.

The unique design of the 3" - 6" Tsunami FP features a ported front cup and hollow cavity with two port holes on either side. Inhibitor is allowed to travel through the front cavity and port holes. The inhibitor becomes trapped between the front cup and rear filming discs. Two filming discs and a filming cup leave a film of inhibitor on the internal pipe wall.

The Tsunami FP is designed to be pliable and is typically made from 70 Shore A Durometer Reliathane.

May be launched in a pigging valve.

Designed to negotiate 1.5D bends, the Tsunami FP moves reliably through piping systems, powered by the strong rear filming cup.



Inhibitor travels through the hollow front cavity and port holes, ultimately leaving a film of protective corrosion inhibitor on the pipe wall.

Size	A	B	C	Weight	Part #
3"	3.38"	4.10"	5.70"	0.80	75-0472-03
4"	4.38"	5.40"	7.50"	1.70	75-0472-04
6"	6.38"	7.40"	10.50"	4.40	75-0472-06

Supplied by:



Anode Engineering Pty Ltd | Engineering Services  
30 Chetwynd Street Loganholme, Queensland 4129  
Australia  
P: 1800 446 400  
E: admin@anodeengineering.com  
www.anodeengineering.com