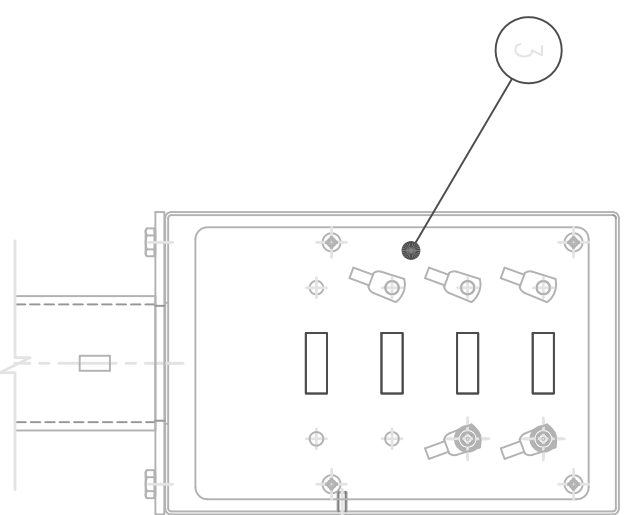
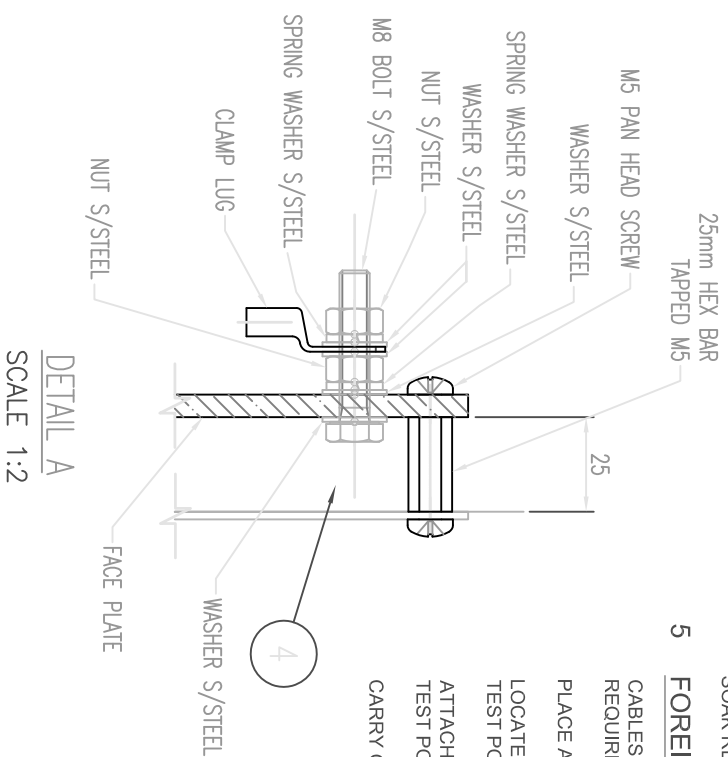


DN80 TEST POINT UPSTAND & ALUMINIUM ENCLOSURE
SCALE 1:15



INTERNAL VIEW B-B
SCALE 1:5



DETAIL A
SCALE 1:2

TEST POINT HEAD BILL OF MATERIALS		DESCRIPTION
ITEM	QTY	
1	1	DN80 TEST POINT UPSTAND, GALVANIZED
2	1	ALUMINIUM ENCLOSURE
3	1	INSULATED PANEL (INTERNAL)
4	AS REQ'D	TERMINATION STUD 316 SS M8

1 TEST POINT ENCLOSURE NOTES:

MATERIAL - TYPE AE03021-AL ENCLOSURES POWDER COATED MARINE GRADE ALUMINIUM
FIT HEAD TO TOP PLATE OF UP STAND WITH 4 OFF M10 GAL BOLTS..
FIT 316 STAINLESS STEEL LABEL TO TEST POINT DOOR AS REQUIRED

2 TERMINAL PLATE FABRICATION NOTES:

INTERNAL MATERIAL - 6mm THICK UPVC MATERIAL (COLOUR GREY)
LABELS SHALL BE EXTERNAL GRADE TREFPOLYTE WITH BLACK LETTERING ON WHITE BACKGROUND

3 GENERAL NOTES:

CABLE SHALL BE INSTALLED WITH SLACK IN PIPE TRENCH AND CONDUIT. BACKFILL MUST NOT DAMAGE CABLE OR CAUSE STRAIN ON CABLE TERMINATIONS.

ATTACHE CABLES AND REINSTATE COATING IN ACCORDANCE WITH DRAWING.

4 REFERENCE ELECTRODE:

REFERENCE ELECTRODE (WHERE REQUIRED) - STABILISED ZINC TO AS 2239 TYPE 1Z1, PACKAGED IN GYPSUM BENTONITE WITH FLEXIBLE COPPER CABLE TAIL (10m YELLOW).

SOAK REFERENCE IN FRESH WATER FOR 20 MINUTES. PRIOR TO INSTALLATION.

5 FOREIGN CROSSING:

CABLES TO BE ATTACHED TO FOREIGN STRUCTURE IN ACCORDANCE WITH STRUCTURE OWNERS REQUIREMENTS.

PLACE A REFERENCE ELECTRODE BETWEEN THE PIPE AND EACH FOREIGN STRUCTURE.

LOCATE TEST FACILITIES AS CLOSE AS PRACTICAL TO THE CROSSING POINT. WHERE PRACTICAL A TEST POINT MAY INCORPORATE CONNECTIONS TO MULTIPLE FOREIGN STRUCTURES.

ATTACH TWO CABLES (1 X 16 MM2, 1 X 6 MM2) TO EACH FOREIGN STRUCTURE AND RUN CABLES INTO TEST POINT.

CARRY OUT INTERFERENCE TESTING TO ALL FOREIGN STRUCTURES AS PART OF COMMISSIONING.



PO BOX 4444
LOGANHOLME DC, QLD 4129
Phone: 61 (0)7 3801 5521
Fax: 61 (0)7 3801 5523
www.anodeengineering.com

REV	DATE	DESCRIPTION	DRAWN	DWG CHECK	DESIGN CHK	DRAFT. SUPER.	PROJECT MANGR.	BY	DATE	TITLE	
A	16/10/09	FOR CLIENT REVIEW	SP	AS	AS					TEST POINT ARRANGEMENT DESALINATION TRANSFER PIPELINE CATHODIC PROTECTION AE 03021-AL ENCLOSURE	
APPROVALS								SCALE	VARIABLES	DRAWING No.	
										XXXXXXXXXXXXXXXXXXXXXXXXXXXX	
								PROJECT No.		REVISION	SIZE
										A	A3